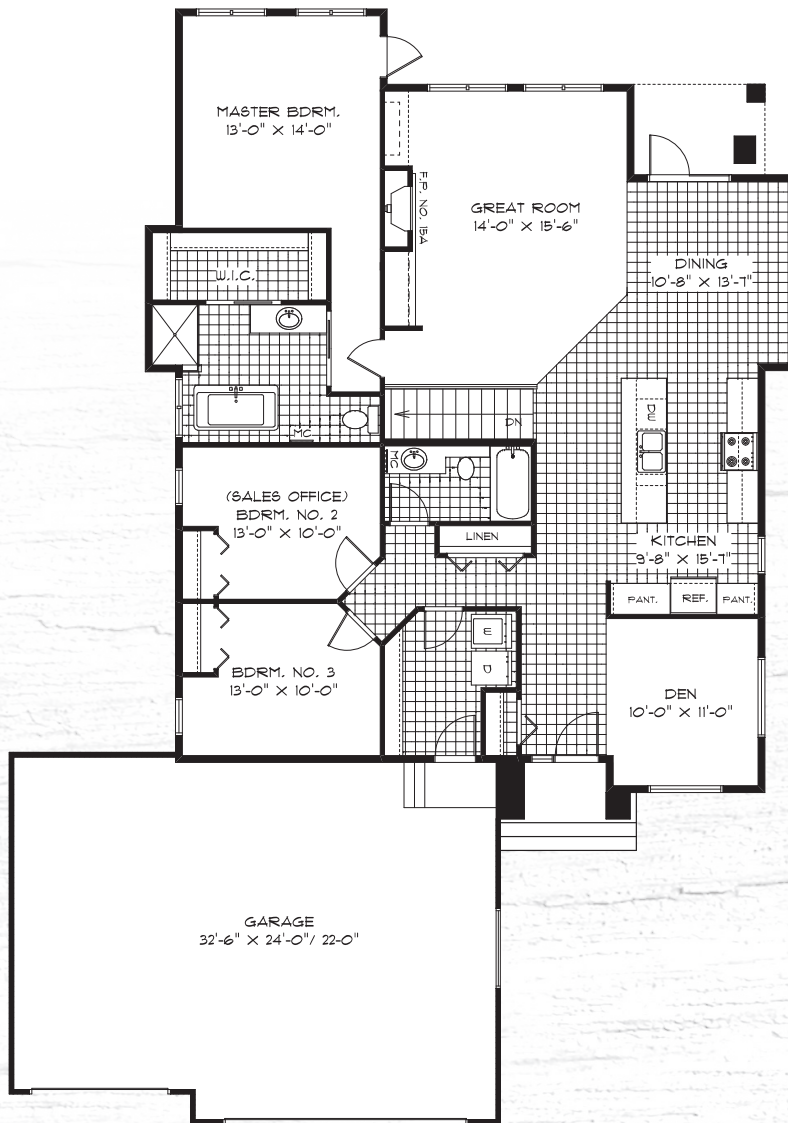




# 10 SOUTHDOWN LANE

**\$599,900** (including lot and GST)

Price subject to change



This Sterling Homes 1,839 sq. ft. bungalow comes complete with a 3 car garage and large rear composite deck. Gorgeous walnut hardwood flooring starts at the entrance creating an upscale feel of high quality finishes that are continued throughout the home. A gourmet kitchen with a 9' island and 2 pantries is complimented by quartz counter-tops, under-cabinet lighting, and a ceramic tile backsplash. The open concept layout allows the built-in gas fireplace and entertainment unit with stone surround and floating shelves to be enjoyed from many rooms in this home. The master bedroom includes a luxurious ensuite with a soaker tub, glass/tiled shower, WIC, as well as an added garden door giving access to the backyard. If this wasn't enough already, it even includes a solar panel system for added energy efficiency.

## DETAILS:

- Hardwood Flooring
- Solar Panel System on Roof
- "Power Smart Home"
- Deluxe Master Ensuite
- Gourmet Kitchen with Oversized Island

**Sterling**  
HOMES

204-801-2639  
r Wittmaier@qualico.com  
sterlinghomeswpg.com



TAYLORFARM.COM